



Dear Colleagues and Partners...

University Outreach and Engagement fosters MSU's land-grant mission by connecting university knowledge with community knowledge in mutually beneficial ways.

UOE also engages in research designed to demonstrate the disciplinary and interdisciplinary impact of engaged scholarship on faculty work and university-community partnerships.

In all of its work, UOE emphasizes university-community partnerships that are collaborative, participatory, empowering, systemic, transformative, and anchored in scholarship.

MSU has also assumed a leadership role with respect to national conversations about the scholarship of engagement—defining, measuring, and evaluating best practices.

We welcome an opportunity to talk with you about how you might become active in the outreach and engagement enterprise.

Sincerely,

Kwesi Brookins

Vice Provost

University Outreach and Engagement



To learn more about University Outreach and Engagement publications, personnel, and activities, visit:
engage.msu.edu

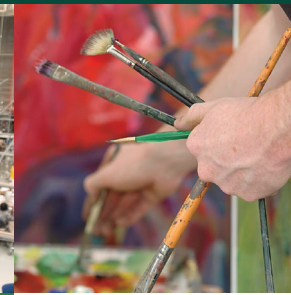


Michigan's citizens increasingly turn to the university for its knowledge resources.

- Adults are returning for higher education in record numbers to renew and expand their professional qualifications.
- Businesses and industries seek technical assistance and technology transfer.
- Agencies seek help in evaluating human services programs.
- Community organizations utilize strategic planning assistance related to local economic development and social concerns.
- Parents request pre-college programs for their children.

Michigan State University established the Office of University Outreach and Engagement to coordinate the university's response to these and other requests from the public. It is the charge of the Office to ensure that the university's outreach and engagement efforts are internally coordinated, externally linked, responsive to important societal issues, and consistent with its mission and policies.

MICHIGAN STATE
UNIVERSITY



MICHIGAN STATE
UNIVERSITY

University Outreach
and Engagement

To contact us:

Kwesi Brookins • kwesib@msu.edu
Vice Provost for University Outreach and Engagement
Acting Director, Julian Samora Research Institute

Elyse L. Aurbach • aurbache@msu.edu
Assistant Provost for University Outreach and Engagement

Stephanie Anthony • antho105@msu.edu
Director, College Access Initiatives

Jena Baker-Calloway • bakerca9@msu.edu
Director, MSU Detroit Center

Burton A. Bargerstock • bb@msu.edu
Executive Director, Office for Public Engagement and Scholarship (OPES)
Director, Communication and Information Technology
Special Advisor to the Vice Provost

Jessica V. Barnes-Najor • barnes33@msu.edu
Director for Community Partnerships, OPES

C. Kurt Dewhurst • dewhurs1@msu.edu
Director for Arts and Cultural Partnerships, OPES

Diane Doberneck • connordm@msu.edu
Director for Faculty and Professional Development, OPES

Marsha MacDowell • macdowel@msu.edu
Director for Michigan Traditional Arts Program, OPES

Miles McNall • mcnall@msu.edu
Director for Community-Engaged Research, OPES

Arnold Weinfeld • weinfel8@msu.edu
Director for Workforce and Economic Development Partnerships, OPES

Renee Miller Zientek • rcbrown@msu.edu
Executive Director, Center for Community Engaged Learning

Rex LaMore • lamore@msu.edu
Director, Center for Community and Economic Development

Kevin Leonard • leonard1@msu.edu
Director, Native American Institute

Susan L. Sheth • shethsus@msu.edu
Director, Gifted and Talented Education

University Outreach and Engagement
Michigan State University
Kellogg Center
219 South Harrison Road, Room 93
East Lansing, MI 48824

Voice: (517) 353-8977 • **Fax:** (517) 432-9541

E-mail: engage@msu.edu

Web: engage.msu.edu



UNIVERSITY
OUTREACH AND
ENGAGEMENT

MICHIGAN STATE
UNIVERSITY



The **Engaged** University...

Engagement is the partnership of university knowledge and resources with those of the public and private sectors to enrich scholarship, research, and creative activity; enhance curriculum, teaching, and learning; prepare educated, engaged citizens; strengthen democratic values and civic responsibility; address critical societal issues; and contribute to the public good.

Committee on Engagement, Big Ten Academic Alliance, 2005



What **University Outreach and Engagement** does...

UOE brings together community expertise and interests with the best of MSU research to create positive change through mutually beneficial partnerships.

Supports the University

UOE supports faculty, staff, and students in their engagement activities

- Assists MSU faculty and staff in developing partnerships with communities
- Supports community-engaged research efforts of faculty
- Consults on National Science Foundation broader impacts
- Helps faculty integrate community-engaged learning into their coursework
- Provides professional development opportunities to enhance capacity for community-engaged scholarship
- Conducts institutional studies and shares data

Fosters Public Access

UOE provides the public with access to university expertise and resources

- Partners with community-based initiatives that advance community priorities
- Offers educational programs for K-12 students
- Sponsors festivals, including the MSU Science Festival and the Summer Solstice Jazz Festival
- Operates community-based hubs, such as the Center for Community and Economic Development with offices in Lansing and Flint, and the MSU Detroit Center in Michigan's largest city
- Publishes catalog websites of MSU programs and resources of interest to the general public

Advocates for Engaged Scholarship

UOE advocates for engaged scholarship on campus, nationally, and internationally

- Promotes policies and practices that encourage community-engaged scholarship
- Consults with MSU departments and other universities about MSU's model of scholarly community engagement
- Encourages a culture supportive of engagement by exploring the work of MSU engaged scholars in campus publications
- Recognizes exemplary community-engaged scholarship through awards programs

Access the Knowledge and Resources **of MSU**

MSU Science Festival

Events for all ages, annually in April

Explore the science that touches our everyday lives with hands-on activities, seminars, demonstrations, exhibits, and guided tours.

sciencefestival.msu.edu

Spartan Youth Programs

Programs for preK-12 students

Browse the website for a wide range of exciting opportunities for youth to improve their knowledge and skills in specific subject areas.

spartanyouth.msu.edu

Visit-Learn-Discover

Learning venues for preK-12 and college students

Find on the website informal learning venues that offer opportunities to experience discovery-based, free-choice, or out-of-school learning.

visitlearn.msu.edu